

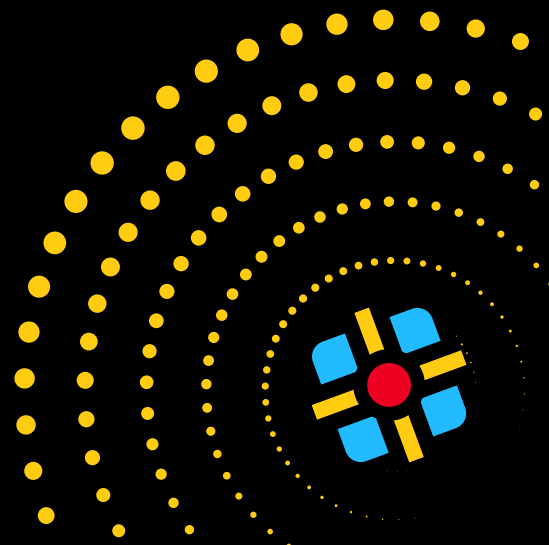
RuleWise



RuleWise ANCHOR

Table of Contents

About RuleWise	1
RuleWise ANCHOR	2
INSIGHT	3
QUEST	4
RESILIENCE	5
EXECUTIVE	6
PROBE	7
INSPECTOR	8
Jurisdictions	9
Why ANCHOR	10



About RuleWise

RuleWise is redefining compliance and governance, equipping financial regulators and regulated firms with AI-driven solutions that transform compliance from a reactive burden into a strategic advantage. By leveraging advanced automation and jurisdiction-specific intelligence, RuleWise empowers organisations to enhance efficiency, reduce risk, and ensure seamless regulatory alignment.

Our Vision

We envision a future where compliance is proactive, data-driven, and strategically advantageous. By harnessing the power of predictive risk insights and cross-jurisdictional intelligence, RuleWise is revolutionising governance, risk management, and compliance (GRC), enabling organisations to anticipate compliance challenges and make informed strategic decisions.

Our Solutions

ANCHOR system delivers Independent Agents that streamline key compliance functions, while our **BEACON** system introduces Collaborative Agents for complex, multi-jurisdictional challenges. Today, RuleWise serves regulators and firms across multiple jurisdictions, continuously innovating to ensure organisations remain not just compliant, but strategically positioned for long-term success.

- **Compliance by Design:** Embedded regulatory logic for real-time policy adherence.
- **AI-Driven Efficiency:** Reducing compliance costs while improving accuracy.
- **Future-Proof Governance:** Staying ahead of changing regulations with dynamic AI models.

With RuleWise, compliance becomes an advantage—not a challenge.

The Founding of RuleWise

RuleWise was established to address the increasing complexity of global compliance. Traditional compliance methods are often fragmented, resource-intensive, and prone to human error. Recognising this challenge, industry leaders in compliance, governance, and AI founded RuleWise as a next-generation compliance intelligence platform. *To get in touch, email info@rulewise.com.*

Simplifying compliance with dynamic AI-driven solutions—this is the RuleWise approach.



RuleWise ANCHOR

AI-Driven Compliance, Effortless Efficiency

RuleWise ANCHOR transforms governance, risk management, and compliance by leveraging predictive risk insights and cross-jurisdictional intelligence. As a suite of Independent Agents, ANCHOR not only automates regulatory tasks and audits but also provides data-driven foresight that anticipates compliance challenges, enabling proactive and strategic decision-making.

Smarter, Faster, More Adaptive

Unlike traditional compliance solutions that require extensive human intervention, RuleWise ANCHOR employs advanced AI logic, pre-configured workflows, and jurisdiction-specific intelligence to streamline compliance operations. Whether conducting audits, enhancing training, or preparing for regulatory inspections, ANCHOR Agents work autonomously to ensure accuracy, efficiency, and adaptability.

ANCHOR Agents at a Glance

RuleWise ANCHOR consists of six Independent Agents, each specialising in a critical compliance function.



INSIGHT

AI-powered regulatory intelligence for cross-jurisdictional compliance. Conducts policy gap analysis and delivers actionable regulatory insights in real time.



QUEST

AI-driven compliance training with adaptive learning. Develops structured curricula, generates training materials, and uses gamified simulations to enhance engagement and retention.



RESILIENCE

Risk scenario simulation and predictive compliance analytics. Strengthens resilience by modelling regulatory changes, stress-testing frameworks, and mitigating emerging risks.



EXECUTIVE

Strategic governance intelligence and horizon scanning. Equips leadership with real-time compliance insights, board-ready reports, and regulatory impact assessments.



PROBE

Regulatory interview simulator. Acts as a “talking head” inspector, engaging users in live questioning, adapting dynamically, and providing instant feedback on responses.



INSPECTOR

Comprehensive regulatory inspection readiness. Conducts mock audits, grades compliance preparedness, and ensures regulatory expectations are met with confidence.

With RuleWise ANCHOR, organisations can reduce complexity, mitigate risks, and enhance operational resilience—ensuring compliance excellence with confidence.



INSIGHT



AI-Driven Compliance Intelligence

RuleWise INSIGHT is an AI-powered compliance intelligence solution that delivers precise, cross-jurisdictional regulatory insights. Designed for financial regulators and regulated firms, INSIGHT automates audits, enhances risk mitigation, and ensures organisations stay ahead of regulatory changes.



Key Features and Benefits

- **Regulatory Intelligence:** Access global and jurisdiction-specific regulatory databases.
- **Automated Audits:** Align policies with compliance requirements to streamline readiness.
- **Comparative Analysis:** Interprets regulatory texts across jurisdictions, providing cross-jurisdictional intelligence that supports gap analysis and strategic decisions.
- **Customised Reporting:** Generate tailored reports for compliance teams and leadership.
- **Advanced Document Management:** Automatically scans, analyses, and summarises compliance documents to ensure alignment with evolving regulations.
- **Policy Gap Analysis:** Detects inconsistencies between internal policies and external regulatory frameworks, highlighting areas needing revision.
- **Real-Time Document Updates:** Syncs with regulatory changes to keep compliance documents up to date and aligned with new requirements.

Why INSIGHT Stands Out

INSIGHT combines real-time data analysis, adaptive AI logic, and predictive insights to deliver a proactive approach to compliance, reducing audit preparation time by up to 30%. Its advanced document analysis capabilities allow firms to instantly review and align policies with regulatory expectations, eliminating manual oversight errors.

“INSIGHT delivers clarity, control, and confidence—ensuring compliance is not just met, but mastered.”



QUEST



AI-Powered Learning for Compliance Excellence

RuleWise QUEST transforms compliance training into an engaging, dynamic, and AI-driven learning experience. Designed for financial regulators and regulated firms, QUEST personalises training, improves knowledge retention, and ensures employees remain audit-ready.



Key Features and Benefits

- **Personalised Learning Paths:** Adapts training to roles, departments, and jurisdictional requirements.
- **Gamified Testing:** Uses interactive simulations and real-world compliance scenarios to enhance engagement and retention.
- **Real-Time Analytics:** Tracks employee progress, identifies knowledge gaps, and recommends targeted reinforcement.
- **Regulatory Certification:** Issues verifiable certificates aligned with jurisdictional requirements, guaranteeing audit preparedness and regulatory confidence.
- **Continuous Updates:** Automatically integrates the latest regulatory changes, eliminating outdated training content.

Why QUEST Stands Out

Unlike traditional compliance training, QUEST dynamically adjusts to individual performance, using real-time analytics and scenario-driven learning to improve knowledge retention by up to 30%. By delivering interactive, AI-powered training, QUEST ensures compliance teams are always prepared for evolving regulations.

“With QUEST, compliance training is no longer a box-ticking exercise—it’s a strategic advantage.”

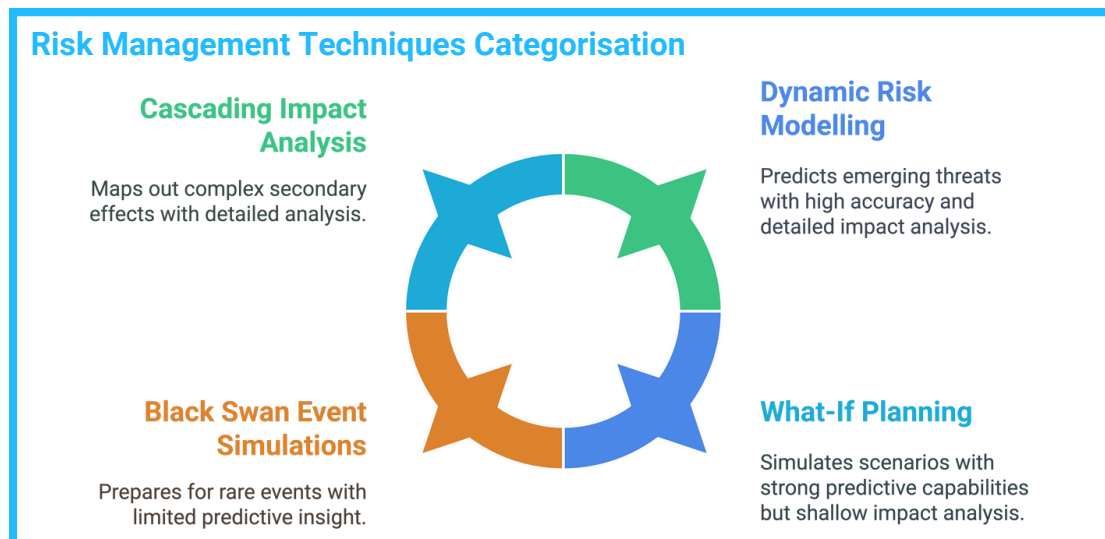


RESILIENCE



AI-Driven Risk Intelligence for Proactive Compliance

RuleWise RESILIENCE enables financial regulators and regulated firms to anticipate, simulate, and mitigate risks before they escalate. Using advanced AI-driven scenario modelling, RESILIENCE allows organisations to evaluate compliance frameworks under simulated risks, identify vulnerabilities, and implement proactive strategies.



Key Features and Benefits

- **Scenario Modelling:** Simulates regulatory shifts, operational disruptions, and crisis events to strengthen risk preparedness.
- **What-If Planning:** Tests compliance frameworks against evolving regulatory landscapes to ensure adaptability.
- **Dynamic Risk Notifications:** Provides real-time alerts on vulnerabilities, resilience sANCHORs, and recommended mitigation strategies.
- **Collaborative Planning Workspaces:** Aligns cross-departmental teams to develop coordinated risk responses.
- **Black Swan Event Simulations:** Strengthens operational continuity by preparing organisations for rare, high-impact disruptions.

Why RESILIENCE Stands Out

Unlike static risk assessments, RESILIENCE continuously evolves with regulatory changes, market conditions, and operational threats. By leveraging AI-driven insights, organisations using RESILIENCE reduce potential risk exposure by up to 50%, enhance regulatory preparedness, and build long-term compliance resilience.

“RESILIENCE turns risk into opportunity—enabling organisations to navigate uncertainty with confidence.”

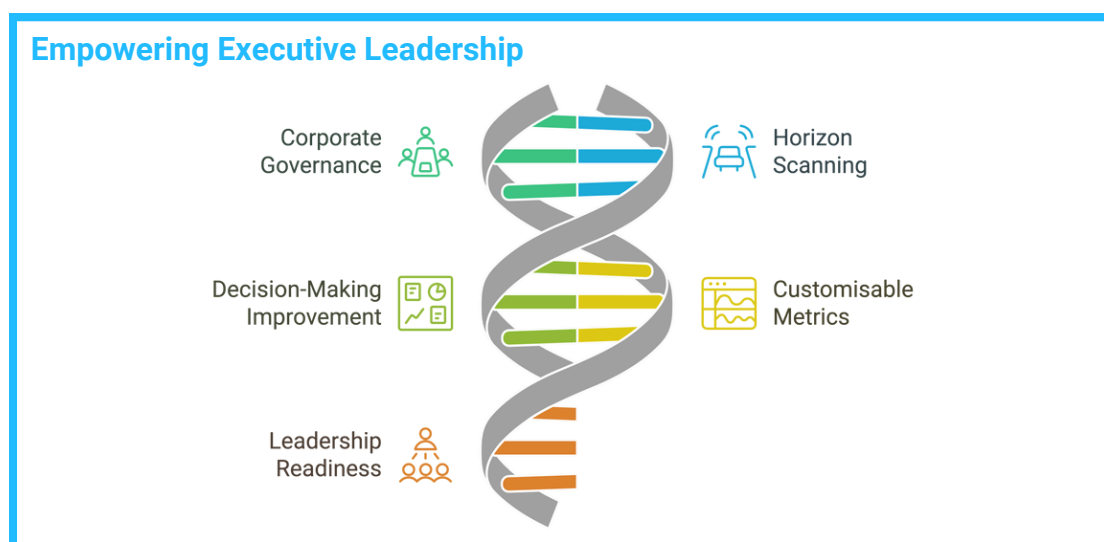


EXECUTIVE



AI-Powered Governance Intelligence for Strategic Leadership

RuleWise EXECUTIVE equips boards and senior leadership with real-time compliance insights, horizon scanning, and governance intelligence. Designed for financial regulators and regulated firms, EXECUTIVE helps organisations proactively navigate regulatory changes and strengthen decision-making.



Key Features and Benefits

- **Corporate Governance Blueprint:** Provides structured workflows for ESG compliance, AI governance, and strategic oversight.
- **Horizon Scanning Tools:** Identifies emerging regulatory trends, enabling leadership to stay ahead of legislative changes.
- **Integrated Analysis Frameworks:** Condenses complex board materials into clear, actionable insights for effective decision-making.
- **Comprehensive Governance Database:** Offers instant access to key regulations, including MiCA, GDPR, FATF, and Basel Accords.
- **Strategic Decision Modelling:** Simulates governance strategies under evolving regulatory conditions to assess impact and risk.

Why EXECUTIVE Stands Out

Unlike traditional governance tools, EXECUTIVE combines AI-driven intelligence with predictive analytics, delivering real-time insights tailored for boardroom decision-making. By transforming regulatory complexity into strategic clarity, EXECUTIVE ensures leadership remains informed, agile, and ready for regulatory shifts.

“With EXECUTIVE, governance is no longer just about compliance—it’s about strategic foresight and confident decision-making.”

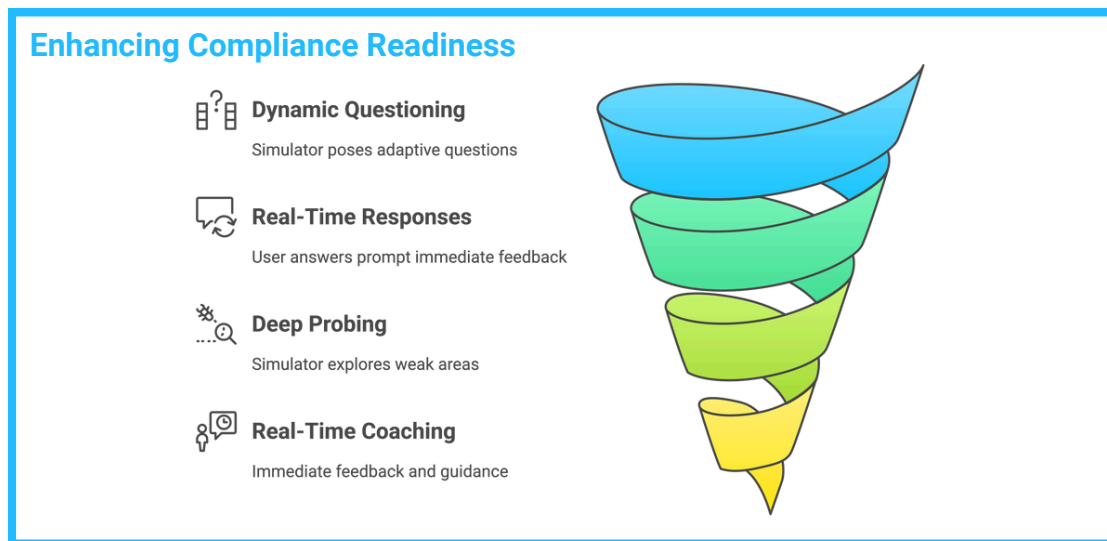


PROBE



AI-Powered Regulatory Interview Preparation

RuleWise PROBE is an advanced AI-driven simulation tool that prepares organisations for high-pressure regulatory engagements by replicating real-world audit interviews and inspections. Designed for financial regulators and compliance teams, PROBE ensures readiness by dynamically adjusting its questioning based on responses, identifying vulnerabilities, and providing real-time coaching.



Key Features and Benefits

- **Simulated Regulatory Interviews:** Replicates jurisdiction-specific audits, including FATF, AML, GDPR, and ESG inspections.
- **Adaptive Questioning Engine:** Uses AI to tailor interview questions based on user responses, simulating real-time regulator scrutiny.
- **High-Pressure Scenario Training:** Exposes compliance teams to real-world regulatory stress conditions, improving resilience and accuracy.
- **Performance Analytics & Feedback:** Tracks response effectiveness, identifies knowledge gaps, and provides tailored recommendations for improvement.
- **Mock Inspection Readiness Assessments:** Conducts trial regulatory visits to ensure preparedness before actual audits.

Why PROBE Stands Out

Unlike traditional compliance training, PROBE engages teams in immersive, real-time regulatory questioning to enhance audit readiness. By integrating AI-driven dynamic questioning, performance tracking, and real-world regulatory stress-testing, PROBE helps organisations reduce preparation time by up to 40%, while improving response accuracy and overall compliance confidence.

“With PROBE, regulatory interviews are no longer a challenge—they’re a well-prepared success.”

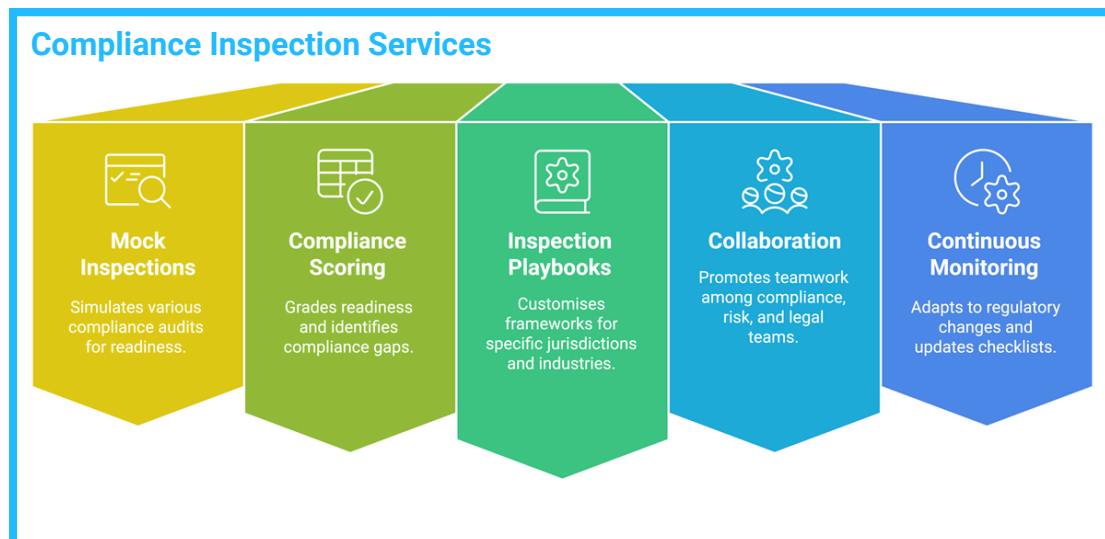


INSPECTOR



AI-Driven Inspection Readiness for Regulatory Success

RuleWise INSPECTOR ensures organisations are always inspection-ready by delivering advanced simulation tools and real-time compliance scoring. Designed for financial regulators and regulated firms, INSPECTOR streamlines inspections, enhances audit preparedness, and identifies compliance gaps before official visits.



Key Features and Benefits

- **Mock Audit Simulations:** Conducts realistic drills for FATF-style and jurisdiction-specific regulatory inspections.
- **Dynamic Compliance Checklists:** Creates tailored workflows that align with evolving regulatory frameworks.
- **Real-Time Compliance Scoring:** Monitors readiness and highlights critical compliance gaps with AI-driven accuracy.
- **Post-Audit Improvement Plans:** Provides targeted remediation strategies to address deficiencies before inspections.
- **Collaborative Inspection Platform:** Enables seamless coordination across teams for comprehensive audit preparation.

Why INSPECTOR Stands Out

Unlike manual audit preparation methods, INSPECTOR leverages AI to dynamically assess readiness, automate pre-audit simulations, and provide real-time scoring. By eliminating inefficiencies and ensuring proactive compliance, INSPECTOR reduces inspection preparation time by up to 50%, improves compliance sANCHORs, and enhances regulatory confidence.

“With INSPECTOR, regulatory visits are no longer a source of stress—they’re a demonstration of compliance excellence.”

”



Jurisdictional Adaptability

Global Compliance, Local Expertise

RuleWise provides AI-powered compliance intelligence for regional regulations, ensuring organisations stay compliant with evolving legal frameworks. Whether managing AML obligations, GDPR requirements, or industry-specific governance standards, RuleWise delivers **jurisdiction-specific insights and automated solutions** that simplify regulatory complexity.

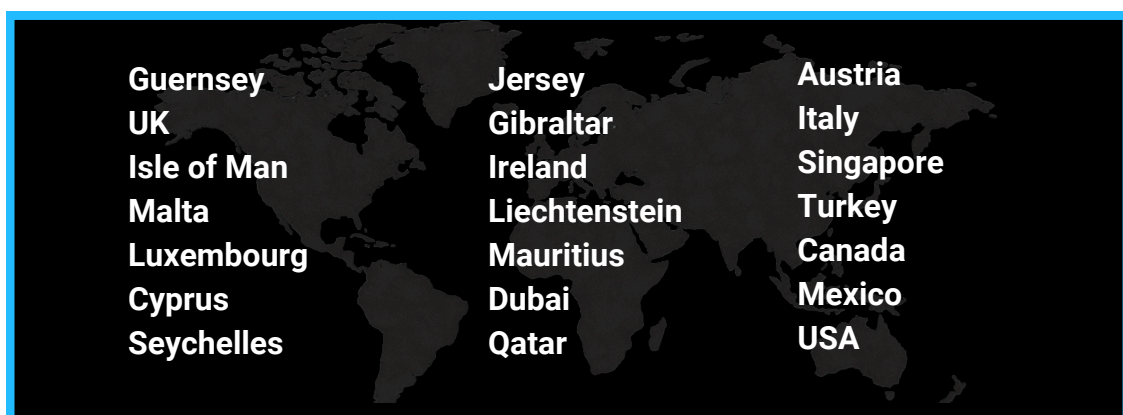
Navigating Complex Regulatory Landscapes

Operating in multiple jurisdictions presents unique challenges. RuleWise ensures seamless compliance across borders by offering:

- **Jurisdiction-Specific Intelligence:** Real-time regulatory updates tailored to local laws.
- **Cross-Border Comparisons:** Identify overlaps, conflicts, and regulatory gaps across multiple regions.
- **Automated Compliance Audits:** Align policies instantly with local regulations through AI-driven assessments.
- **Customised Reporting:** Generate tailored reports to provide clear guidance on multi-jurisdictional obligations.
- **Risk Prediction & Alerts:** Stay ahead of regulatory changes with AI-powered notifications.

Expanding Our Global Reach

RuleWise is continuously expanding its presence across key financial and regulatory hubs. **By integrating AI-driven insights with jurisdictional expertise, RuleWise ensures organisations achieve seamless, cross-border compliance with confidence.** Our current and upcoming jurisdictions include:



By delivering tailored regulatory intelligence and real-time compliance insights, RuleWise helps organisations navigate the complexities of multi-jurisdictional compliance with ease.



Why ANCHOR

Transforming Compliance into a Strategic Advantage

RuleWise ANCHOR turns governance, risk management, and compliance (GRC) into a proactive, strategic advantage by leveraging predictive risk insights and cross-jurisdictional intelligence. This enables organisations to anticipate regulatory changes, navigate complex compliance landscapes, and transform compliance into a competitive advantage. By replacing manual workflows with Independent Agents, ANCHOR delivers precision, automation, and adaptability across regulatory landscapes. Its modular AI-driven framework ensures that compliance teams stay ahead of evolving regulations while reducing operational complexity.

1 Modular Compliance Solutions

Independent Agents provide scalable, task-specific automation, allowing organisations to tailor compliance workflows to their exact needs.

2 AI-Driven Efficiency

Automates audits, training, risk analysis, and governance reporting, cutting compliance task times by up to 50% and enhancing accuracy.

3 Jurisdiction-Specific Intelligence

Delivers real-time regulatory updates tailored to multi-jurisdictional requirements, ensuring seamless global compliance.

4 Proactive Risk Management

Identifies emerging risks, regulatory gaps, and compliance challenges before they escalate, enabling proactive mitigation.

5 Scalable & Adaptable Compliance

Unlike rigid compliance platforms, ANCHOR evolves with regulatory demands, offering flexibility for both current and future compliance needs.

6 Audit Ready Assurance

Simulates regulatory visits, stress-tests compliance frameworks, and ensures organisations are always inspection-ready.

Achieve Compliance Excellence with ANCHOR

RuleWise ANCHOR is the solution for organisations demanding scalability, automation, and intelligence in compliance—moving beyond mere compliance to strategic excellence.

“Compliance isn’t just about meeting standards—it’s about setting them. With ANCHOR, organisations move from reactive compliance to strategic excellence.”



Our Founders

At the heart of RuleWise's success are its founders, **Simon** and **Mort**, whose combined expertise and visionary leadership have driven the company's innovative growth and global impact.

Simon Kirkpatrick: Innovator and Strategist

Simon is an accomplished entrepreneur with extensive experience in IT, artificial intelligence, and technology-driven solutions. Before founding RuleWise, Simon's groundbreaking work applied machine learning and generative AI to address complex challenges in agriculture, healthcare and financial services. This innovation led to the development of a proof of concept that demonstrated AI's transformative potential in compliance and governance for the regulated financial services sector.

At RuleWise, Simon leads strategy and operations, ensuring the company remains at the forefront of compliance innovation. Known for his forward-thinking mindset and adaptability, he has been instrumental in shaping RuleWise's strategic direction and operational excellence. *To get in touch, email simon@rulewise.com.*

Mort Mirghavameddin: Client Advocate

Mort complements Simon's vision with a sharp focus on client engagement and business growth. With a distinguished career in regulatory compliance and financial governance, Mort ensures that RuleWise consistently delivers exceptional value to clients. His deep understanding of multi-jurisdictional challenges has been pivotal in building trust and fostering long-term partnerships with organisations and regulators worldwide.

At RuleWise, Mort leads sales and client relationships, ensuring clients receive tailored solutions that address their unique regulatory needs. His dedication to clients is a cornerstone of RuleWise's approach. *To get in touch, email mort@rulewise.com.*

The Founding of RuleWise

RuleWise was born from Simon's entrepreneurial vision and innovative application of generative AI. After successfully proving the concept of AI-driven compliance solutions, Simon joined forces with Mort, whose expertise in financial governance aligned perfectly with Simon's technological ambitions. Together, they established RuleWise with a shared commitment to transforming compliance governance. Their partnership brought RuleWise to life, creating a company that today stands as a global leader in AI-driven compliance and governance solutions.

Why Their Leadership Matters

Simon and Mort's leadership reflects the ANCHOR values of RuleWise: **innovation, trust, collaboration, and clarity**. By combining cutting-edge technology with a deep understanding of regulatory landscapes, they have created a company that not only addresses today's compliance challenges but also anticipates the needs of tomorrow.





www.rulewise.com

@RuleWiseHQ